

FLIGHTLINE WEBBING REPLACEMENT PROCEDURE

A new hex head shackle pin is included with pre-applied Loctite in every replacement webbing kit. Use this pin when changing the webbing. Refer to the instructions below:

1. Remove the FlightLine device from service and place it securely on the work bench.
2. Remove the nozzle assembly.



Assembled Nozzle

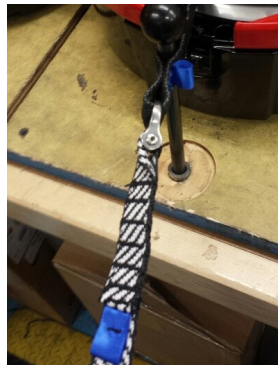
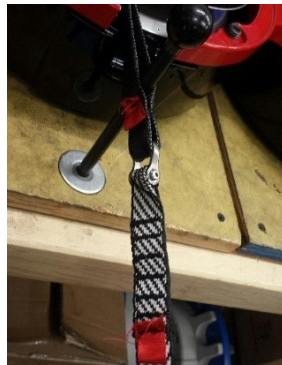


Step 1: Remove pin



Step 2: Remove the joined nozzle halves

4. While ensuring the unit is secured, pull out the webbing line until the end of the drum lead and the joining shackle are exposed. Notice that the ribbon color on the webbing corresponds to the ribbon color on the drum lead.



USE ONLY GENUINE FLIGHTLINE REPLACEMENT PARTS

Once the shackle pin is tightened, it must not be loosened or re-tightened. This will break the locking compound and the shackle pin may become loose. The shackle pin must be replaced if this happens.

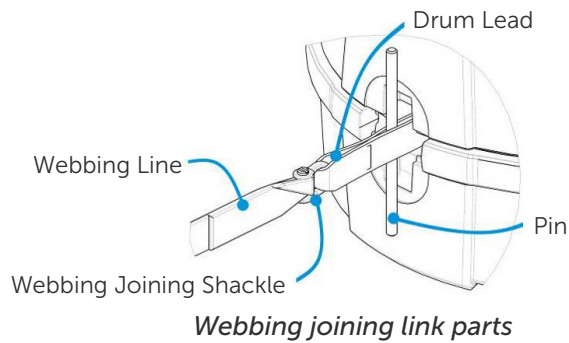


DO NOT ALLOW THE WEBBING LINE OR DRUM LEAD TO RETRACT INTO HOUSING

With nozzle removed take care not to permit uncontrolled retraction of drum lead or webbing line into casing. Uncontrolled retraction will result in internal damage and require repair by manufacturer.

5. Locate the loop in the drum lead, approx. 150 mm (6 in) past the link - Place a suitable pin through the loop in the drum lead to prevent it from retracting back inside the casing.

Head Rush Technologies
1835 38th Street, Suite C, Boulder, CO 80301



7. Unscrew the shackle pin using the provided 2.5mm hex wrench. If your unit does not have a hex head shackle pin already installed, use a flat head screw driver to remove the pin. Discard this pin.
8. Remove webbing line. Do not remove the shackle from the drum lead. Ensure the loop part of the shackle is fitted to the drum lead.



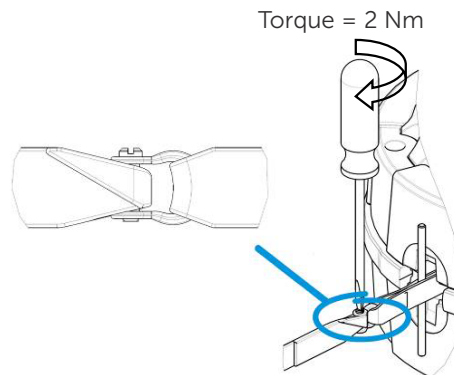
DO NOT ATTEMPT TO RE-TIGHTEN SHACKLE PIN

Once the shackle pin is tightened, it must not be loosened or re-tightened. This will break the locking compound and the shackle pin may become loose. The shackle pin must be replaced if this happens.



ENSURE PROPER RETRACTION

Ensure that the webbing line feeds squarely, and without twists, when retracting back into the device. Failure to do so may result in equipment failure, serious injury, or death.



Correct shackle fit

9. Fit the new line, passing the provided threaded shackle pin through the loop as shown.
10. Tighten the shackle pin to 2 Nm(18 lb-in), ensuring the threads are fully engaged and the end of the pin is flush with the joining shackle as shown.
11. Remove the holding pin and allow the new line to slowly retract until drum lead and joining link is inside casing. Ensure that the line does not twist.
12. Refit nozzle assembly - Refer to steps 2 and 1 in reverse order. Ensure webbing is free of twists when aligned nozzle insert.
13. Slowly retract the webbing line into the casing, checking the action is smooth and adequate spring resistance is felt.
14. Once the line is fully retracted, pull out the line a short distance using reasonable force and allow it to retract. Repeat two or three times to ensure line is firmly wound onto the drum.
15. Return FlightLine to service and check for correction operation, including performing weighted drop testing.